

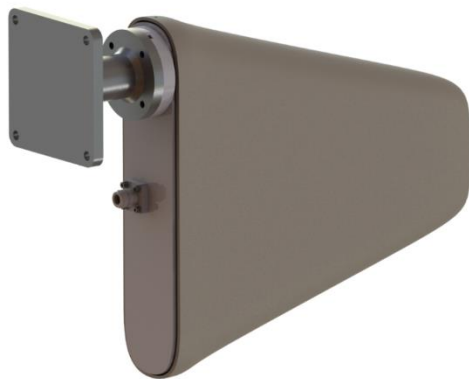
Wide-Beam Monitoring LPDA Antenna

600 – 3700 MHz

Product Code: LPDA-A0156

VERSION: 1.1

SPECIFICATIONS:



Note: Picture is for illustration only
and actual product may differ slightly

PRODUCT FEATURES:

- Wideband frequency 600 to 3700 MHz
- VSWR < 2.5:1
- Wide H-Plane Beamwidth
- Rugged construction
- Ice resistant

PRODUCT APPLICATIONS:

- Wideband Monitoring

| Electrical: | |
|---|--|
| Frequency range | 600 – 3700 MHz |
| VSWR | < 2.5:1 |
| Nominal input impedance | 50 Ω |
| Connector | N-type female |
| Feed power handling | Receive only |
| Gain (typical) | See graph below |
| E-plane 3 dB beamwidth | 60° - typical |
| H-plane 3 dB beamwidth | 120° - typical |
| Polarisation | Linear |
| Mechanical: | |
| Dimensions (w x l) | 440mm x 330mm x 125mm |
| Material | Aluminium, stainless steel, fibreglass |
| Total mass | <3.7 kg (incl. mounting bracket) |
| Mounting method | 4 x M8 Bolts |
| MTBF | 500,000 h |
| Environmental: designed to meet the following specifications | |
| Wind survival | 160 km/h calculated |
| Operating Temperature | -30°C to +65° (no icing) |
| Storage Temperature | -40°C to +85° |
| Corrosion | Designed for MIL-STD-810F MIL-1250A |

PRODUCT DESCRIPTION:

The LPDA-A0156 directional log-periodic dipole array (LPDA) is primarily designed for monitoring applications where a wide beamwidth is required. The antenna can work up to 180° with reduced gain and covers the frequency band between 600 and 3700 MHz

The antenna is completely encapsulated in a radome. The antenna is provided with a mounting bracket.

Wide-Beam Monitoring LPDA Antenna

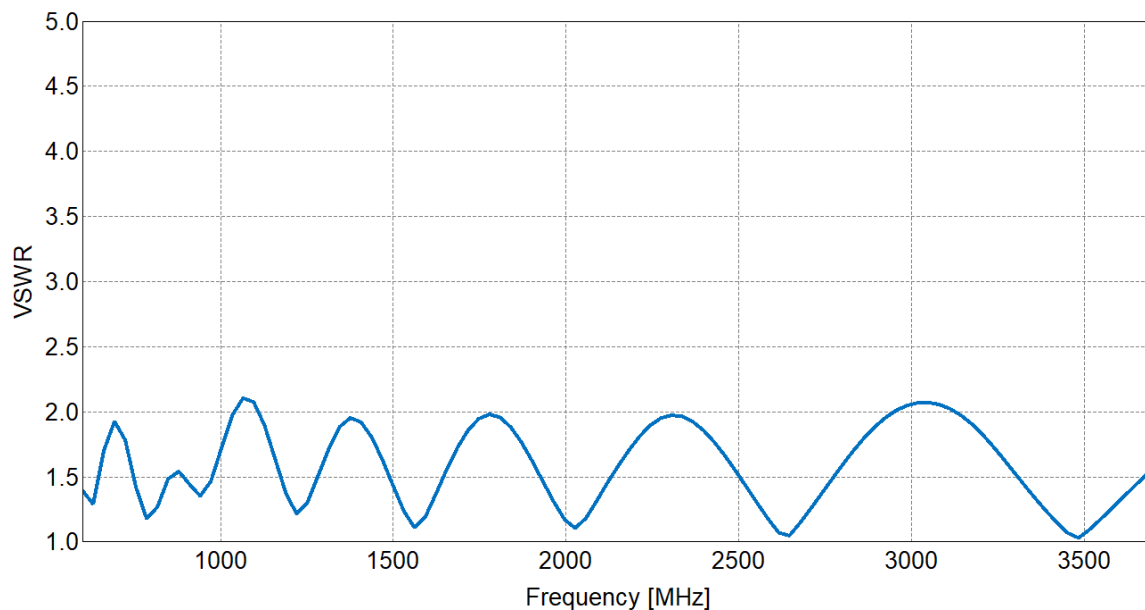
600 – 3700 MHz

Product Code: LPDA-A0156

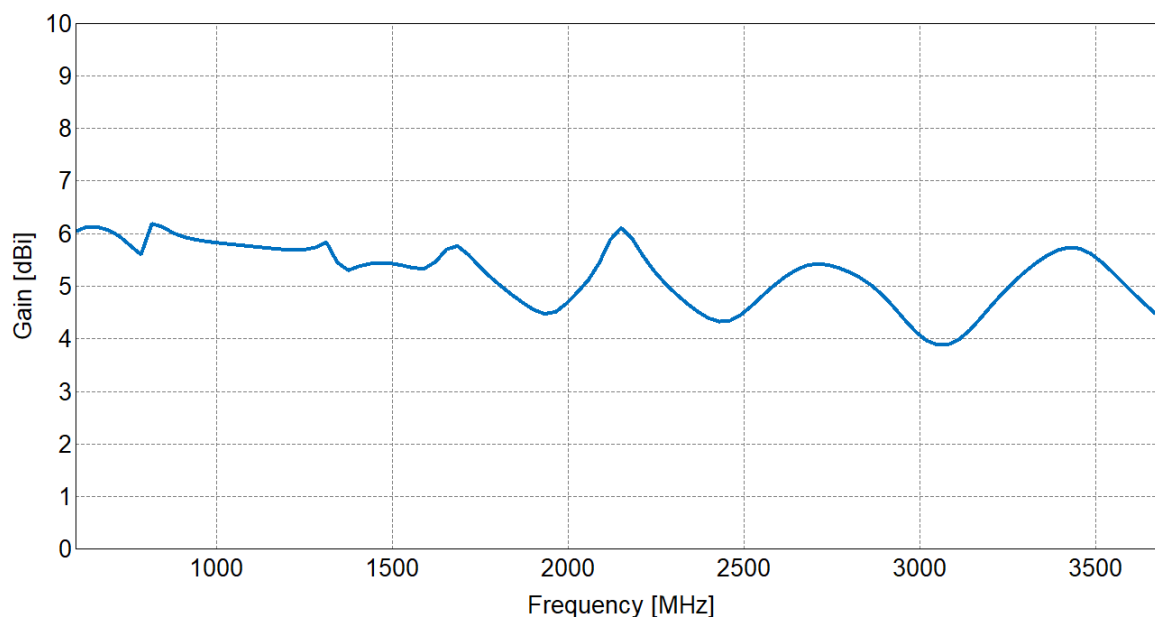
VERSION: 1.1

VSWR AND GAIN GRAPHS:

Typical VSWR:



Typical GAIN:



Wide-Beam Monitoring LPDA Antenna

600 – 3700 MHz

Product Code: LPDA-A0156

VERSION: 1.1

RADIATION PATTERNS (normalised):

